

# Second Health Information Technology Resource Teach-In

Preparing Underserved and Communities of Color for Health IT and EHR Adoption: *Meaningful Use, What's in it for you?*

# NAVIGATING Health IT

## Conference Agenda

REGISTER - <http://shireteachinla.eventbrite.com>

8:00 – 9:00 **Continental Breakfast and Registration**

9:00 – 9:15 **Welcome: Plenary Session**

Russell J. Davis, DPA, MAPT, President, Summit Health Institute for Research and Education, Inc.

9:15 – 10:00 **Statement of the Occasion**

**Introduction of Morning Keynote Speaker:** Marcia Thomas-Brown, MHSA, LNHA, CHE, Chief Operating Officer, National Health IT Collaborative for the Underserved

**Morning Keynote Speaker:** Thomas Tsang, MD, Medical Officer, Meaningful Use Division, Office of the National Coordinator for Health IT (ONC)

10:00 – 11:45 **“Understanding and Implementing Meaningful Use Regulations – What, Why, How” Panel Discussion w/ Q&A**

**Moderator:** Andrea Pennington, MD, Chief Medical Officer, Logical Images

- Johanna Barraza-Cannon, MPP, Associate Director of Healthcare, Navigant Consulting Inc.
- Eva Powell, MSW, Director of HIT Program, National Partnership for Women & Families
- Janice Sneed, MBA, Vice Chancellor of Community & Workforce Development, Southern University at Shreveport
- José A. Arévalo, MD, FAAFP, Senior Medical Director, Sutter Independent Physicians
- Frank Meza, MD, MPH, Assistant Area Medical Director of the Los Angeles and West LA Kaiser Medical Centers, and Member of the KP National Diversity Council

11:45 – Noon **BREAK**

Noon – 1:30 **LUNCH**

**Introduction of Luncheon Keynote Speaker:** Paul B. Simms, MPH, Assistant Professor, Department of Health Policy and Management School of Public Health, Loma Linda University

**Luncheon Keynote Speaker:** Speranza Avram, MPA, Executive Director, CalHIPSO

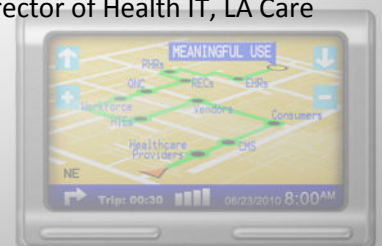
1:30 – 2:00 **BREAK**

### Breakout Sessions

2:00 – 3:30 **Session A – “The Right Investment, the Right Implementation, & the Right Use”**

*Provide updated and hands-on information with key experts regarding how to adopt and meaningfully use Electronic Health Records (EHRs) in your practice and work environment.*

- **Moderator**– Paul B. Simms
- **Subject Expert** – Joyce Hunter, MBA, CEO, Vulcan Enterprises, LLC
- **Subject Expert** – Andrea Pennington
- **Subject Expert**– Sajid Ahmed, Interim Director, HITEC-LA, and Director of Health IT, LA Care Health Plan



# Second Health Information Technology Resource Teach-In

Preparing Underserved and Communities of Color for Health IT and EHR Adoption: *Meaningful Use, What's in it for you?*

# NAVIGATING Health IT

## **Session B – “Consumer Engagement, Being On the Right Track”**

*Provide updated and hands-on information regarding how to ensure PHRs, EHRs and Health Information Exchanges (HIEs) are accessible and utilized by one's health providers and in our communities in order to improve access and quality of care and help eliminate health disparities.*

- **Moderator** – Eva Powell
- **Subject Expert**—Gloria Dunbar, CEO, HYBRiD Health IT, Inc.
- **Subject Expert**—John Mattison, MD, Assistant Medical Director, Chief Medical Information Officer, KP HealthConnect
- **Subject Expert** – Cynthia Solomon, President, FollowMe, Inc.
- **Subject Expert** – Jasmine Edwards-Smith, Youth Health Ambassador for the Healthshack Project, Wind Youth Center

## **Session C – “Building an HIT Workforce & Our Roles in Meeting the Need”**

*Provide updated and hands-on information regarding the current needs, challenges, and opportunities in preparing a health IT workforce, specifically to support underserved and communities of color.*

- **Moderator** – Kathie Westpheling, MPH, Executive Director, Association of Clinicians for the Underserved, and Workforce Development & Training Workgroup Liaison, National Health IT Collaborative for the Underserved
- **Subject Expert** – Dorothy Roane, MA, RHIA, Director of HIT Program, East Los Angeles College
- **Subject Expert** – Samir Chatterjee, PhD, MS, Professor & Director, Masters in Health Information Management (MHIM Program), Claremont Graduate University
- **Subject Expert** – James L. Comins, MSN, Director HIT Western Regional Community College Consortium, Workforce and Economic Development, Los Rios Community College District

3:30 – 4:00      **Closing: Plenary Session**

Adjournment

